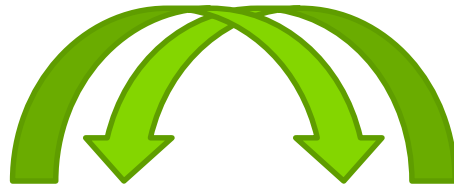




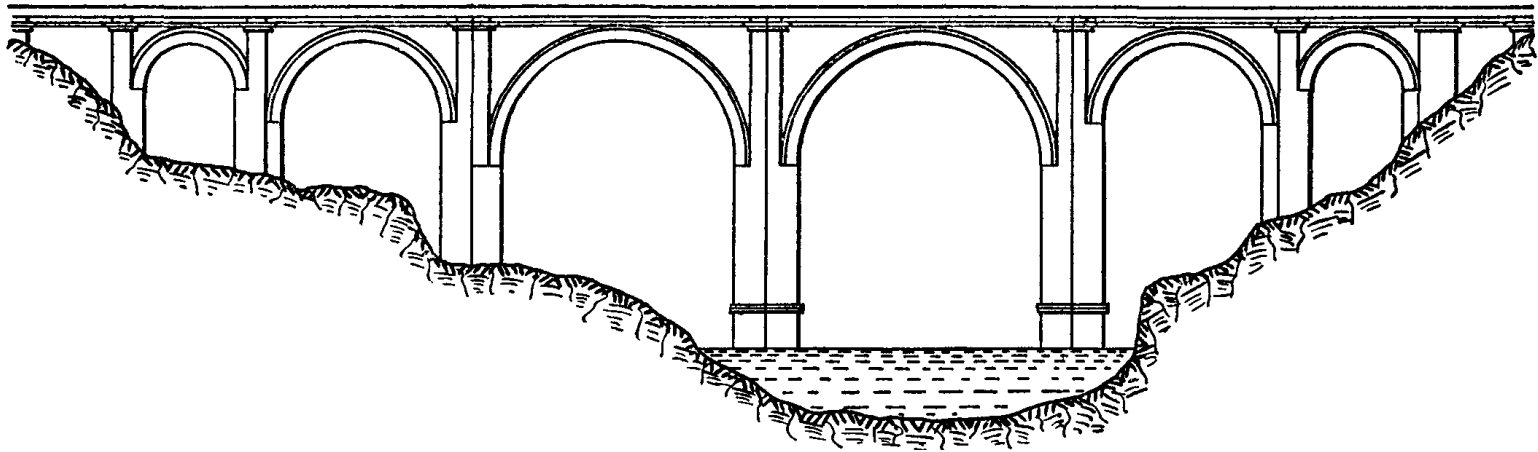
CONSORTIUM
for PUBLIC EDUCATION

Future Ready Partnerships

**K-12 Students,
Educators, Families**



**Post-Secondary
Employers, Educators**



CONSORTIUM
for PUBLIC EDUCATION

**34 years supporting
Kids and Community**

Who we are

Partnerships across 7-8 counties with:

- 60+ school districts
- 40+ employers
- 20+ post-secondary institutions
- 60+ community partners

No Geographic Boundaries or Federal/State Mandates

Programs, Networks, Partnerships

CPE: Future Ready Students

Who am I?

- *interests, aptitudes, skills, place*

Who do I want to be?

- *awareness of careers/pathways*

How do I get there?

- *education, experiences, networks*



Partnerships with Employers

Worker Shortage, Skills Needed
(Inflection Point)

Awareness, Preparation, Pathways
(especially for occupations, sectors, skills in high demand)

Limited access to schools
(or overwhelmed w/school requests)



“Employers must move from being consumers of talent to investors of talent in the marketplace.”

Bill Demchak, CEO, PNC Financial Services

Partnerships with Educators, Students, Families

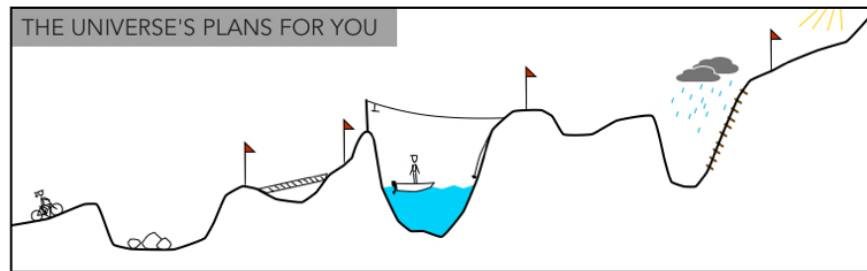
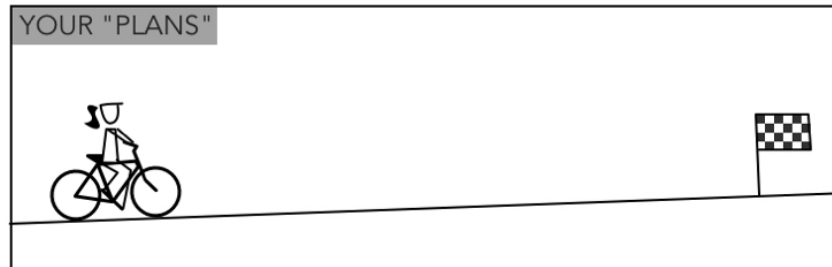
Preparing Kids for the Uncertain

Awareness

Preparation

Planning

Educator



DOGHOUSEDIARIES

/s

wledge,

r plans

families)

Consortium Programs

**The Future
Is Mine**

**Student Powered
Solutions**

PartnerUp

**Be a Middle
School Mentor**

Students

**Educator in the
Workforce**

**Future Ready
Alliance**

**Future Ready
Partnerships
Conference**

Adults

Who Can Connect You?

- **Direct Reach to Schools**
- **Out of School Time Programs**
- **Intermediaries:**
 - **Intermediate Units**
 - **Non-Profit Organizations**
 - **Local Workforce Investment Board, Chambers, Economic Development, etc.**

Ways to Connect

Challenge: Project-Based Learning



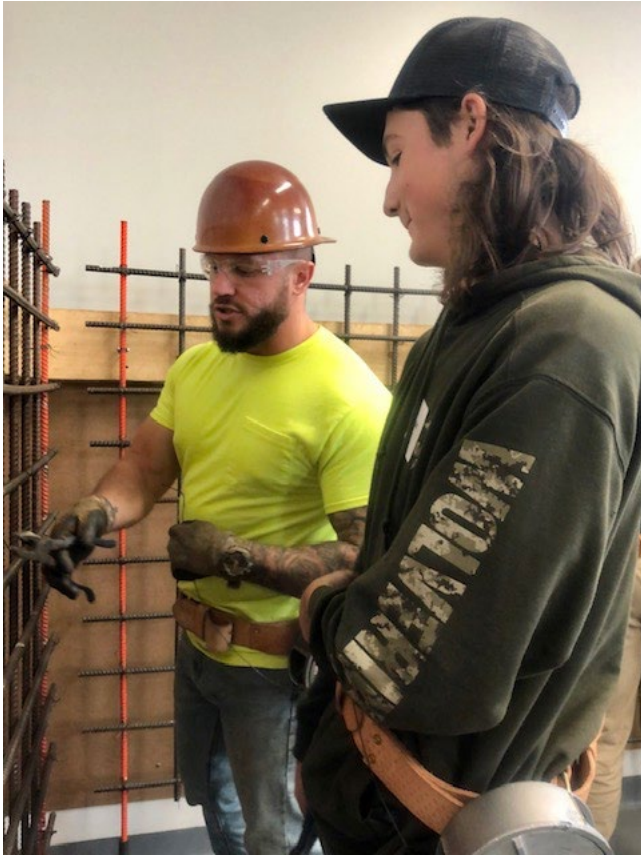
Student Groups



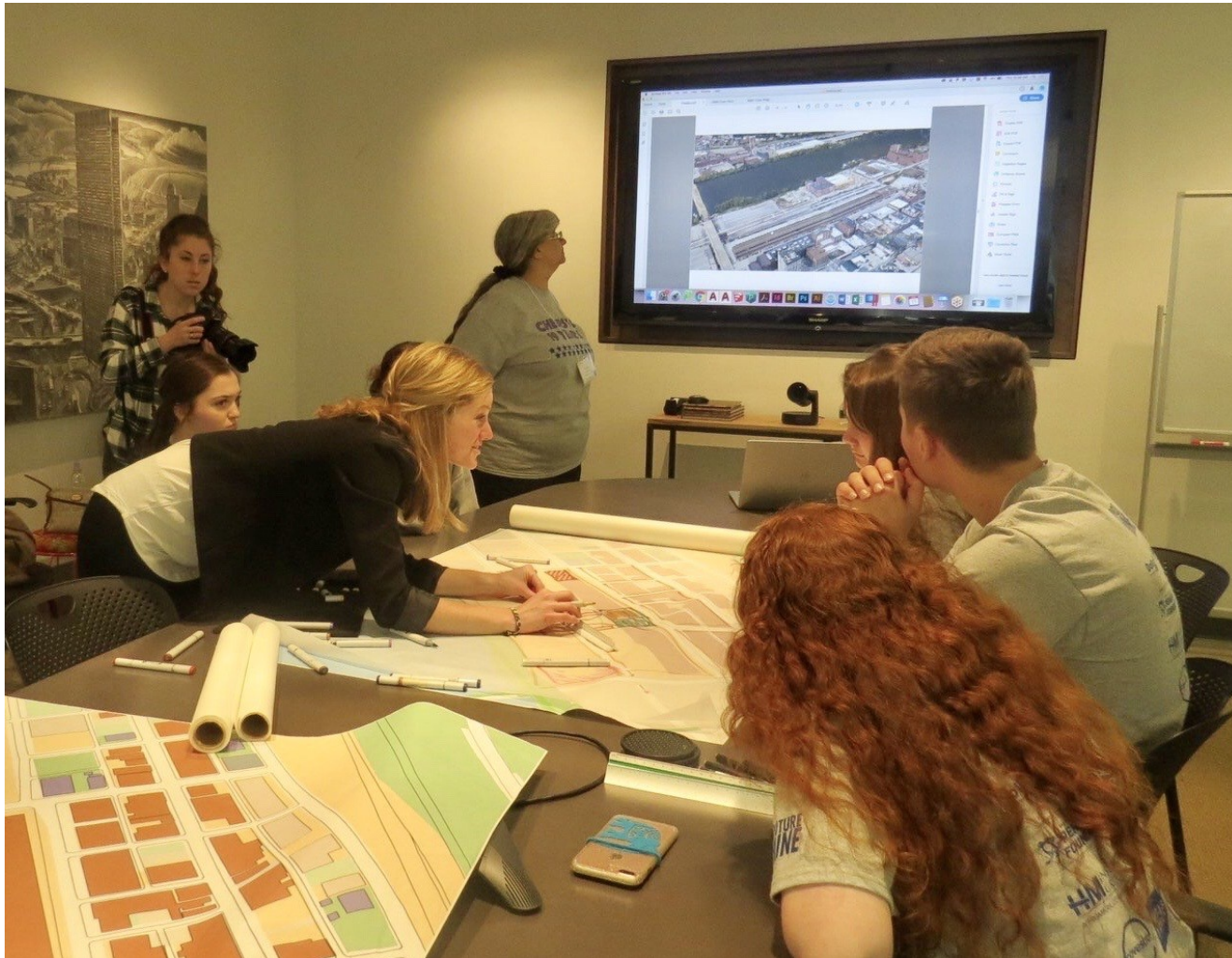
Mentoring/Advising



Tours



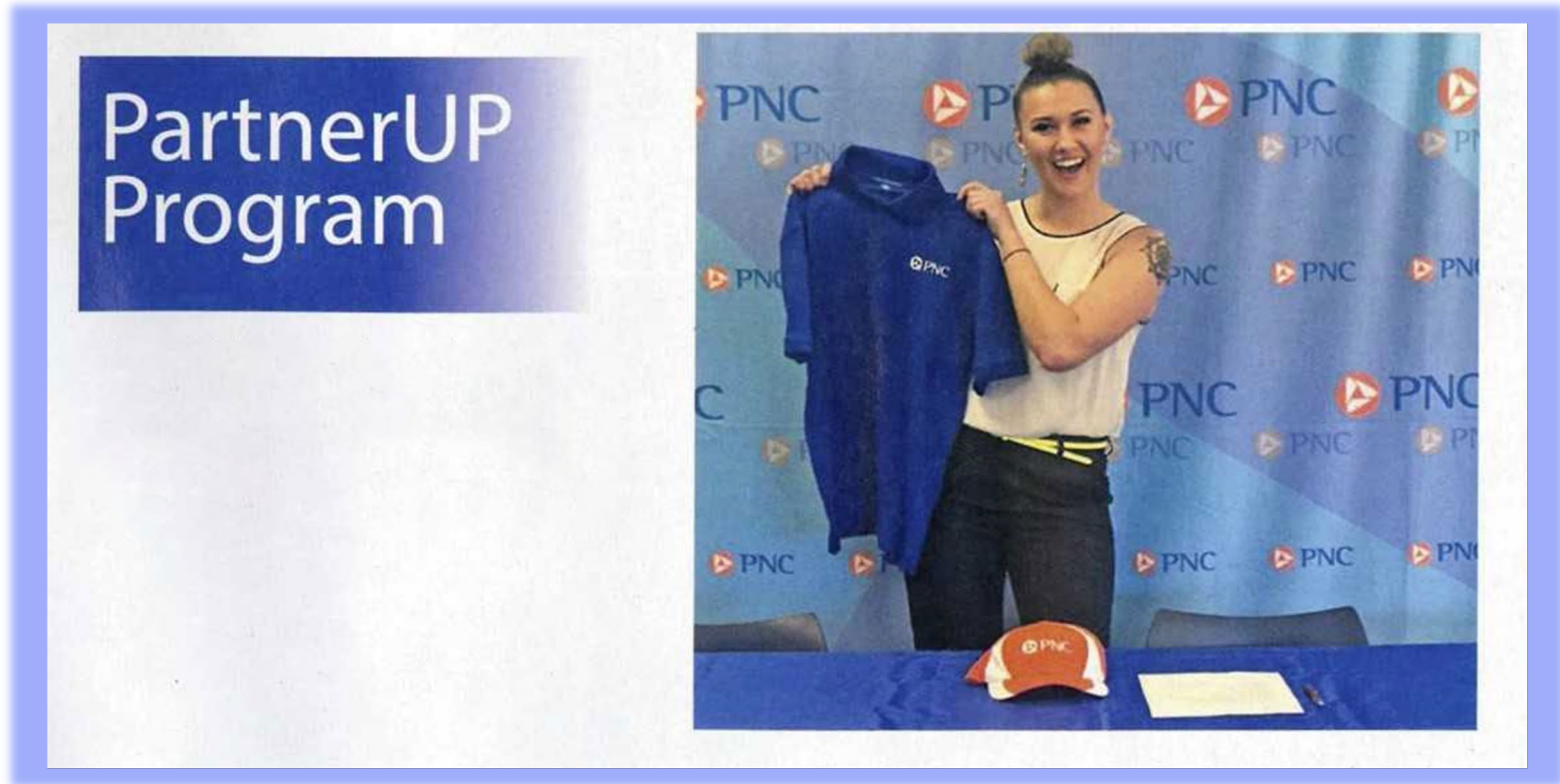
Job Shadows and Internships



Educator in the Workforce



Industry Led Collaborations



PNC Financial + Allegheny Health Network, Comcast, Giant Eagle, Matthews International, Peoples Gas

Future Ready Partnerships Conference



Keep in Mind

➤ Diversity of Opportunities:

- Direct to work?
- Certificate, 2 year degrees?
- 4 year degrees?

➤ Age Groups: elementary, middle, high

➤ *Clearances*

Thank You

Consortium for Public Education

412-678-9215

tcfpe.org

Mary Kay Babyak, Executive Director

mbabyak@tcfpe.org

Gina Barrett, Program Director

gbarrett@tcfpe.org