



— Making a difference, together —

Neighborhood Traffic Control Guidelines Anne Arundel County Traffic Engineering Division

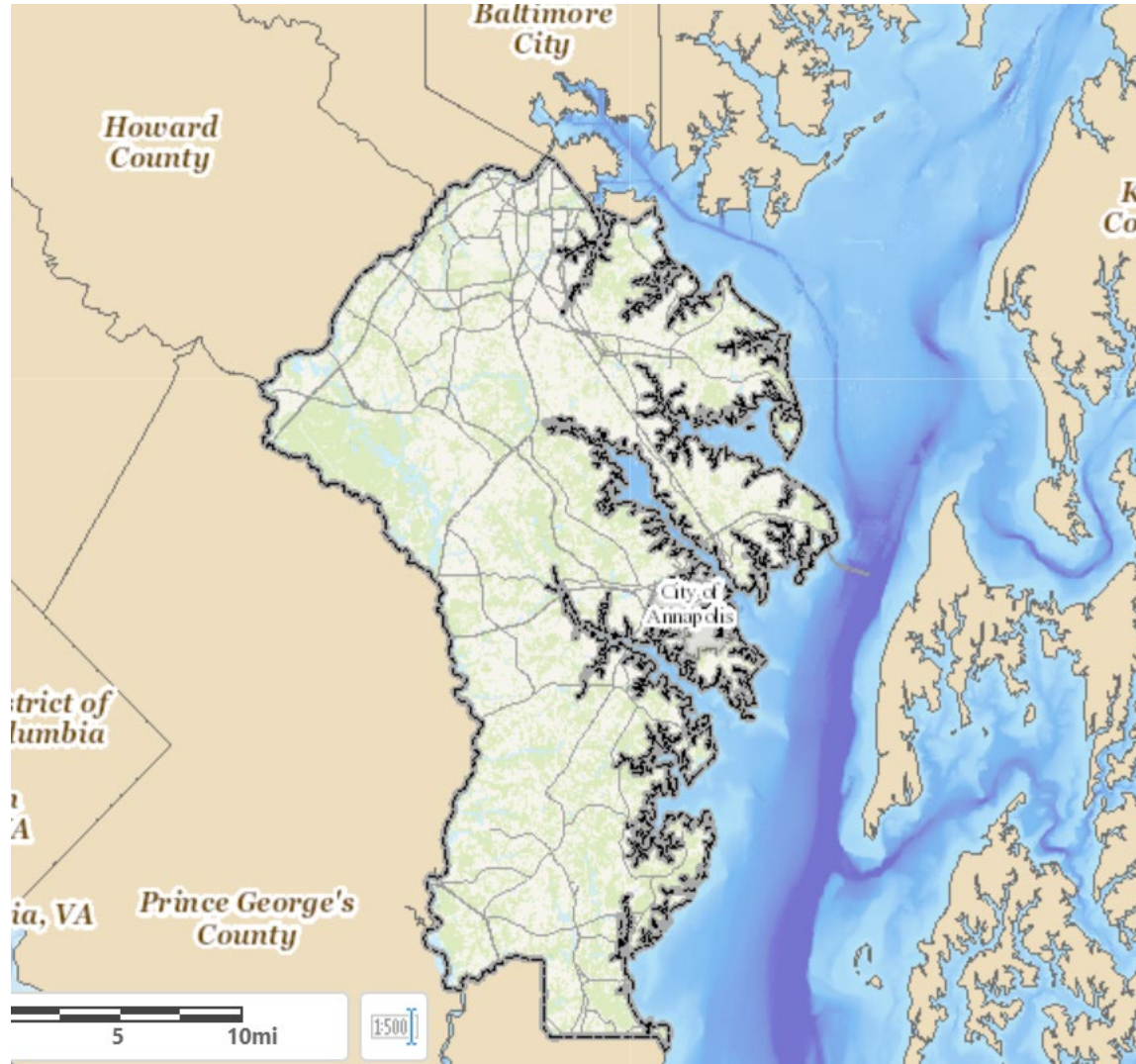
Presentation By: Eric Tabacek



DPWandYOU.com | *Making a difference, together*



Anne Arundel County



In Maryland:

- Number of Counties: 24
- Number of ‘Incorporated’ Cities: 157
- Anne Arundel County: 2 Cities



In Pennsylvania:

67 COUNTIES

- 9 classes, based on population
- Most governed by 3 commissioners
- 8 have "home rule"

959 BOROUGHES

- No classes based on population
- Weak mayor
- Council holds most power
- Follow Borough Code

1,546 TOWNSHIPS

- 2 classes based on population
- Governed by commissioners or supervisors
- Most decentralized government
- Follow Township Code

56 CITIES

- 4 classes, based on population
- Most are 3rd Class except Philadelphia, Pittsburgh & Scranton
- Tend to have strong mayor, centralized government
- Some have "home rule"
- Others use Third Class City Code

NTC Guidelines History

- 1980's Maryland Counties asked to 'Do Something' about traffic in residential areas
- Process from specific community project was formalized in 1995
- Numerous revisions based upon new techniques and Law Office input
- Provides guidance to engineers and communities on step by step process



Issue: Citizen Complaint of Speeding

- Traffic Engineering Division receives a complaint

-‘They are “Flying” through my neighborhood!!’

X Incorrect Answer: ‘Do you live near the Airport?’

✓ Correct Answer: ‘That is unfortunate, how may I help you?’



Step 1: Get Community Involvement

- Ask citizen to contact community association
(if none exists, ask that a small group be formed)

Community consensus needed!!



Step 2: Define Problem

- Meet with group to discuss concerns
- Develop agreement on specific traffic safety issues



Step 3: Document Problems

- Collect Data
 - Observations
 - Speed/Volume Counts
 - Cut Through Study
 - Sight Lines



Step 4: Review Study Results

- Meet with community again
 - Present study results
 - Explain observations



Step 5: Develop Options

- Sound Options that will address concerns
 - Community Awareness Campaigns
 - Police Enforcement
 - Traffic Engineering Changes



Step 6: Decide On Plan

- Get Community Consensus
- Accepted Traffic Engineering Practice Only!
- Define desired results
- Note possible impacts to:
 - Parking
 - Public/Emergency services



Step 7: Implement Plan

- Advise Community on time frame
- Advise specific residents on any changes fronting their property



Step 8: Confirm Results

- Collect after data
- Follow-up community meeting
- Return to Step 5??



Traffic Calming Techniques:

- Educational Measures
 - Speed Trailer
 - Monitoring/Publication of Speeds
 - Flyers/Newsletters
 - Community Demonstrations



Techniques (cont.)

- Enforcement
 - Police Speed Traps
 - R.A.V.E.N. Letter
(Reckless Aggressive Vehicle Enforcement Notification)



RAVEN Letter



R.A.V.E.N.

Reckless Aggressive Vehicle Enforcement Notification

From: Corporal D.Bellis 1458
Traffic Coordinator
Anne Arundel County Police Department
Eastern District
204 Pasadena Rd.
Pasadena, MD 21122
410-222-6145

To: Owner of the following Vehicle, Tag #
Vehicle Info.

Mr. / Ms. , please be advised that at approximately AM/PM, the above listed vehicle was observed by a concerned citizen of Anne Arundel County at This vehicle was being operated in one of the following manners, possibly in violation of Maryland State Law.

Violation(s):

- Reckless / Negligent Driving
- Speeding
- Improper Passing / Improper Lane Change
- Following Too Closely
- Running Red Light / Stop Sign
- Improper Turn
- Loud Music / Exhaust System in a residential area
- Other:

We understand that from time to time we are given inaccurate tag information and the vehicle may not be yours. If this is the case, please disregard this notice. If your vehicle is the violating vehicle, please see to it that the problem is addressed with whomever was operating the vehicle.

This notice is not a legal document. If you wish to discuss this **mater**, please contact the above named officer at the above phone number. This notice is intended to assist you in correcting any problems related to the operation of your vehicle.

Thank you for your assistance in making Anne Arundel County safer for all motorists.

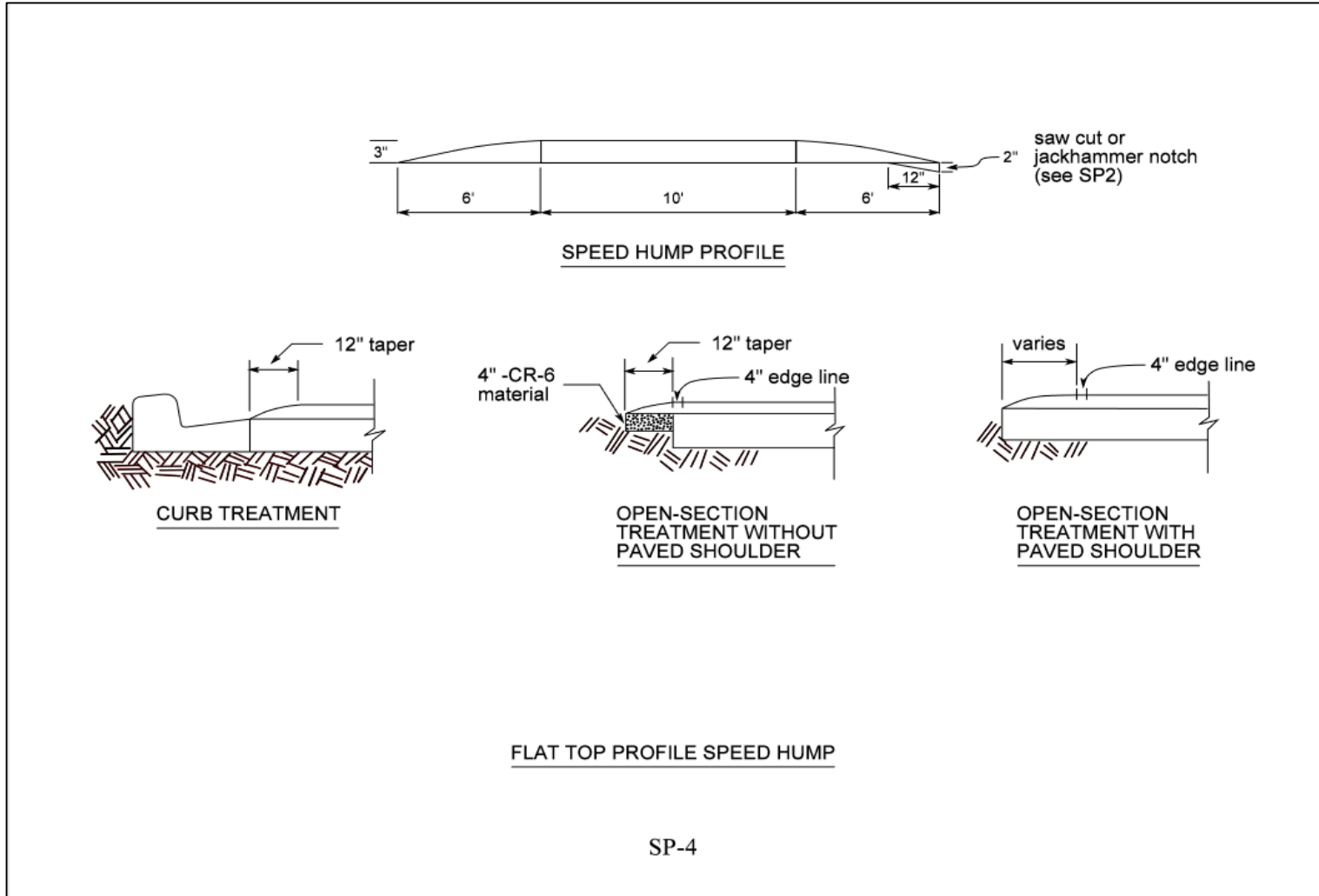


Techniques (cont.)

- Physical Changes
 - Edgelines
 - Islands/Chokers/Traffic Circles
 - One-Way/Do Not Enter Patterns
 - Speed Activated Sign
 - Speed Humps (last resort)



Speed Hump Profile



SP-4





DPWandYOU.com | *Making a difference, together*





DPWandYOU.com | *Making a difference, together*





DPWandYOU.com | *Making a difference, together*





DPWandYOU.com | *Making a difference, together*





DPWandYOU.com | *Making a difference, together*





DPWandYOU.com | *Making a difference, together*





DPWandYOU.com | *Making a difference, together*





DPWandYOU.com | *Making a difference, together*





DPWandYOU.com | *Making a difference, together*



Speed Hump Guidelines

- >750 ADT and 15 mph over posted speed limit
- OR
- >1000 ADT and 10 mph over posted speed limit
 - Posted speed limit <35 mph
 - No Arterials or Higher Class Function
 - ADT < 10,000
 - Road Length > 1000 ft. long
 - Community Contribution*



Cons of Speed Humps

- Slows Emergency Response
(not more than 6 allowed on route from firehouse)
- Additional Signing
- Noise
- Maintenance
- Specific Point Improvement Only??



Before/After Data

- Edgelines

1. Before 33.6 (max 45-58)/After 33.6 (max 45-49)
2. Before 39.4 (max 55-67)/After 39.9 (max 50-60)

- Chokers

Before 44.7/After 40.5

- Speed Humps

1. Before 34.9/After 30.0
2. Before 34.2/After 29.5



Lessons Learned

- Insure entire community is kept informed
- Work with a small group of committed residents
- Insure a community ‘consensus’ (but understand that there will always be some who disagree)
- Clearly identify negative impacts
- County and community must agree upon the problem and desired outcome
- Can be part of ‘Corridor Study’



Guideline Link

[https://www.aacounty.org/departments/public-works/highways/road-maintenance/Traffic Maintenance/neighborhood-traffic-control](https://www.aacounty.org/departments/public-works/highways/road-maintenance/Traffic%20Maintenance/neighborhood-traffic-control)

Or

Go to www.aacounty.org and type 'Neighborhood Traffic Control' in the search bar



Thank You!

Eric Tabacek

410-222-1256

pwtaba@aacounty.org

Questions?



DPWandYOU.com | *Making a difference, together*





Bureau of Utility Operations

24-Hour Emergency Water Services: (410) 222-8400
Billing Inquiries: (410) 222-1144



Bureau of Highways

Northern District: (410) 222-6120
Central District: (410) 222-7940
Southern District: (410) 222-1933
Traffic Lights/Signs: (410) 222-1940



Bureau of Waste Management Services

Bulk Trash Service/Curbside Collections: (410) 222-6100



Bureau of Engineering

General Inquiries: (410) 222-7500



www.facebook.com/annearundeldpw



[@AACoDPW](https://twitter.com/AACoDPW)



DPWandYOU.com | *Making a difference, together*

