

An aerial photograph of a campus or industrial area. In the foreground, there is a large parking lot filled with many cars. A road with a bridge crosses a small stream or canal. To the right, there is a large, open field, possibly a sports field or a large parking area. The background is dominated by dense green trees and a large brown field, possibly a construction site or a large open area. The text is overlaid on the image in a large, white, sans-serif font.

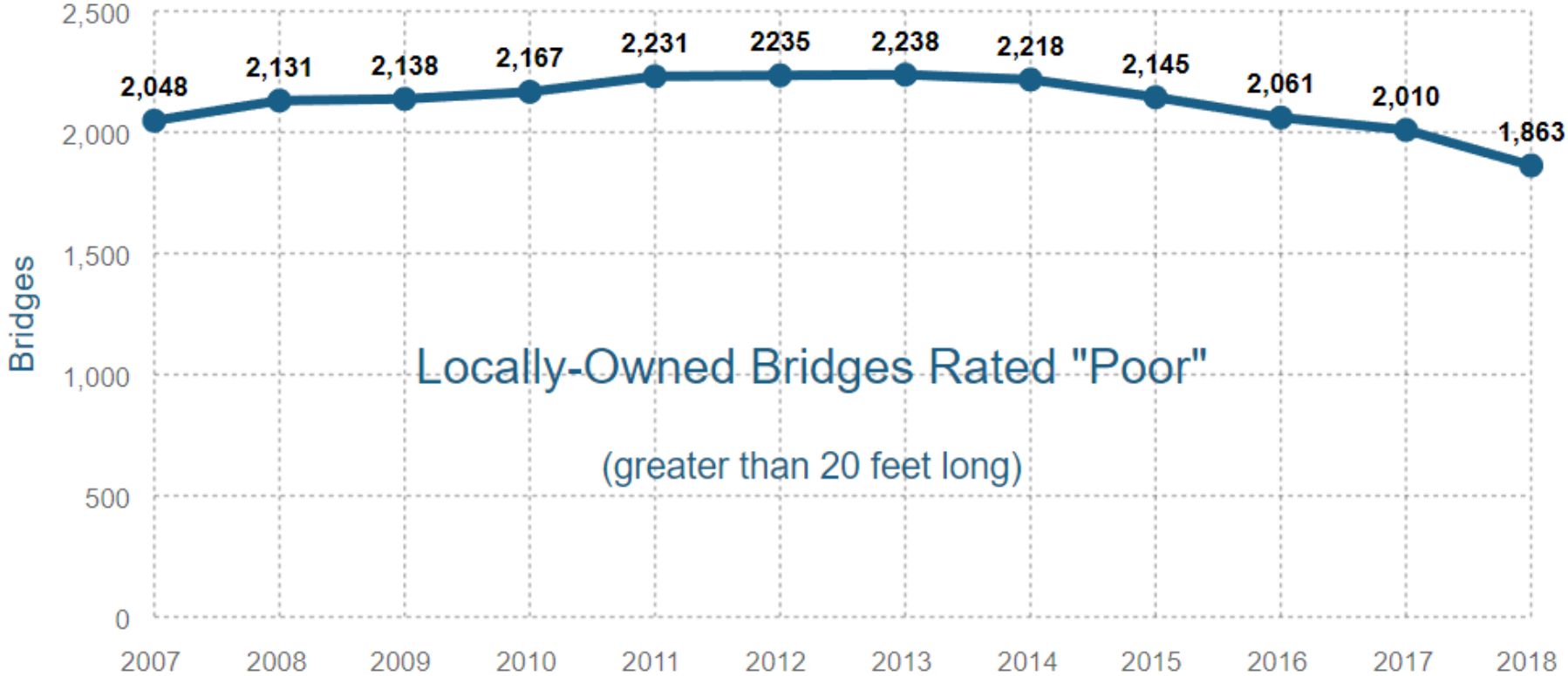
\$5 Vehicle Registration Fee for Local Use Fund – A Statewide Panel Discussion

PSU Transportation Engineering and Safety Conference 2019

What is the Fee for Local Use Fund?

- Enabled by Act 89
- Counties can pass ordinance to collect \$5 fee at annual vehicle registration
- Funding is limited similar to liquid fuels money
- Adding the words “an annual” to Section 1935 of Title 75 in 2018 by Act 91

Statewide Initiative to Improve Local Bridges

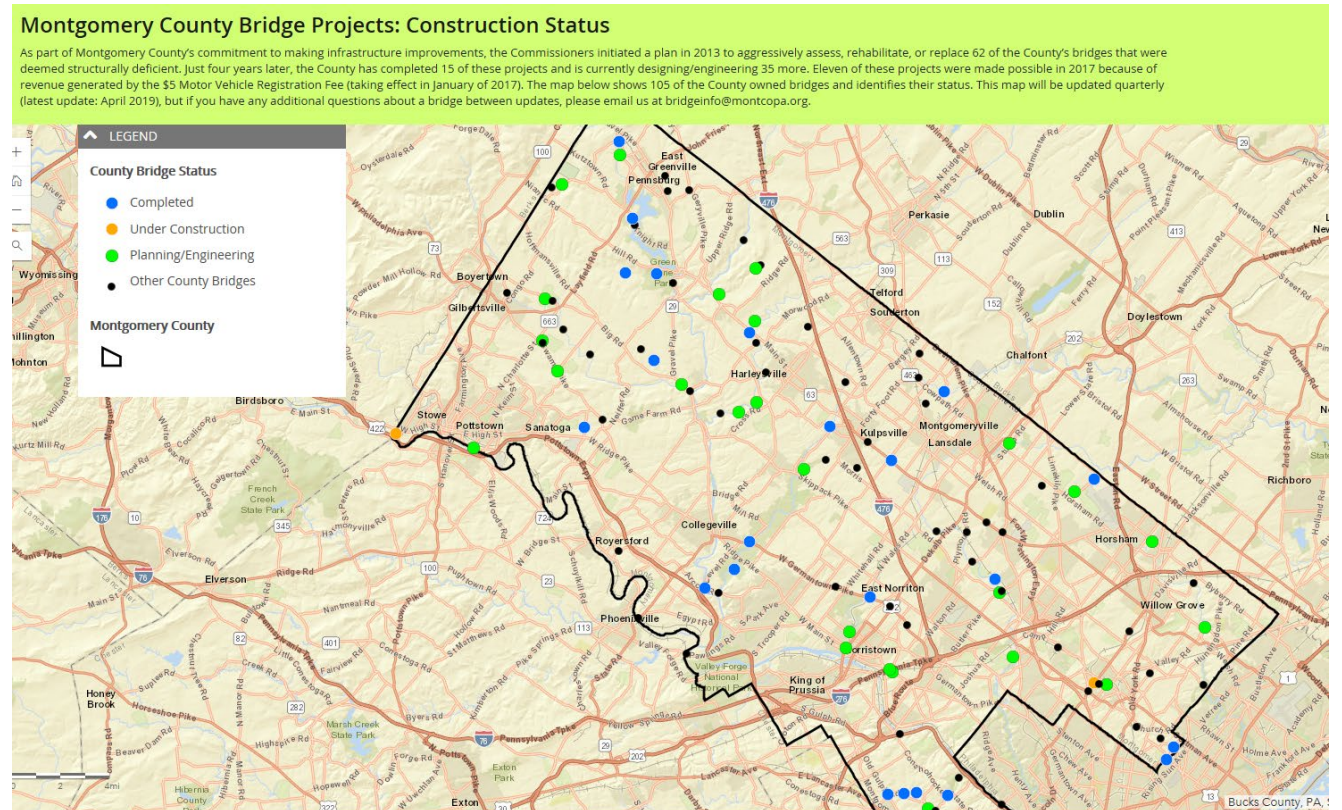


Source: PennDOT Bridge Management System

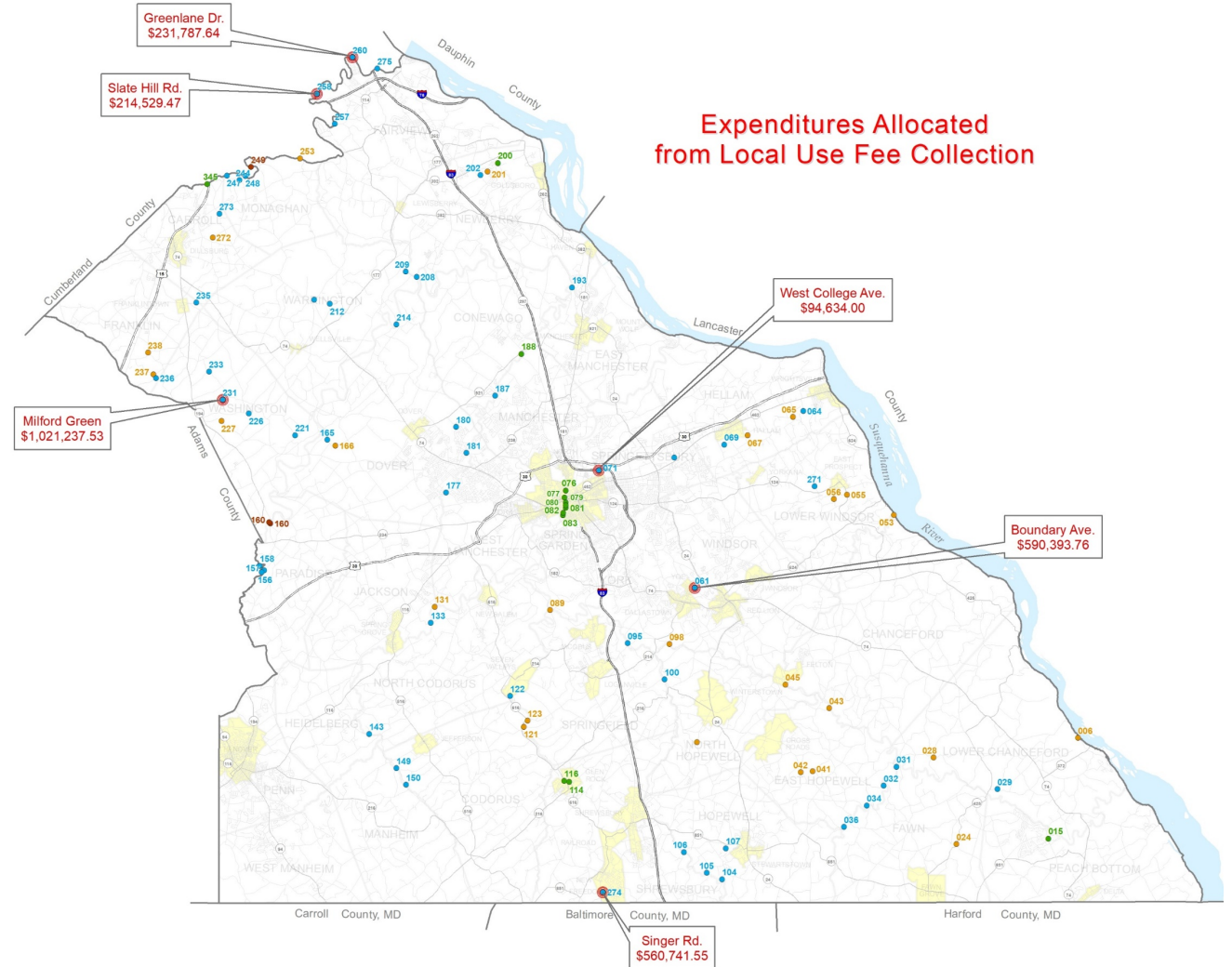
Our Panelists



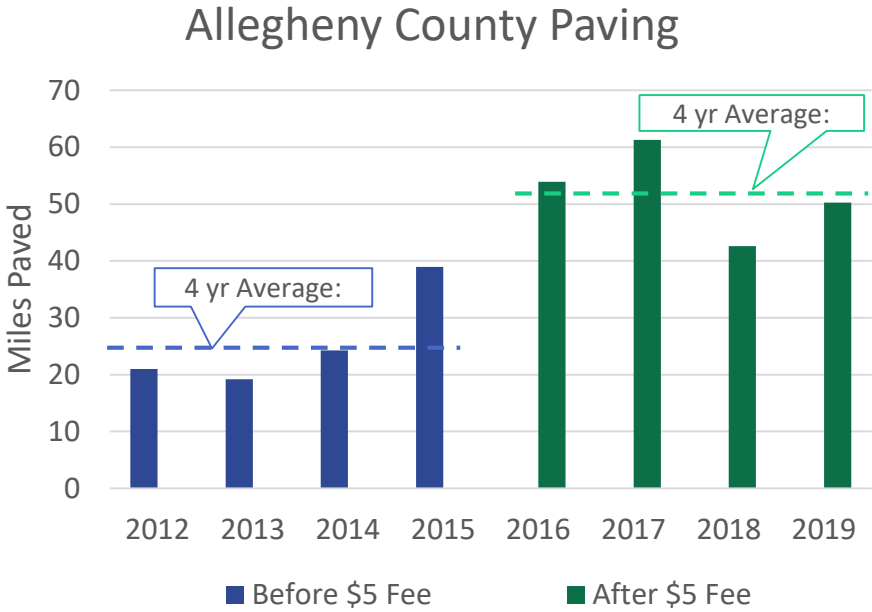
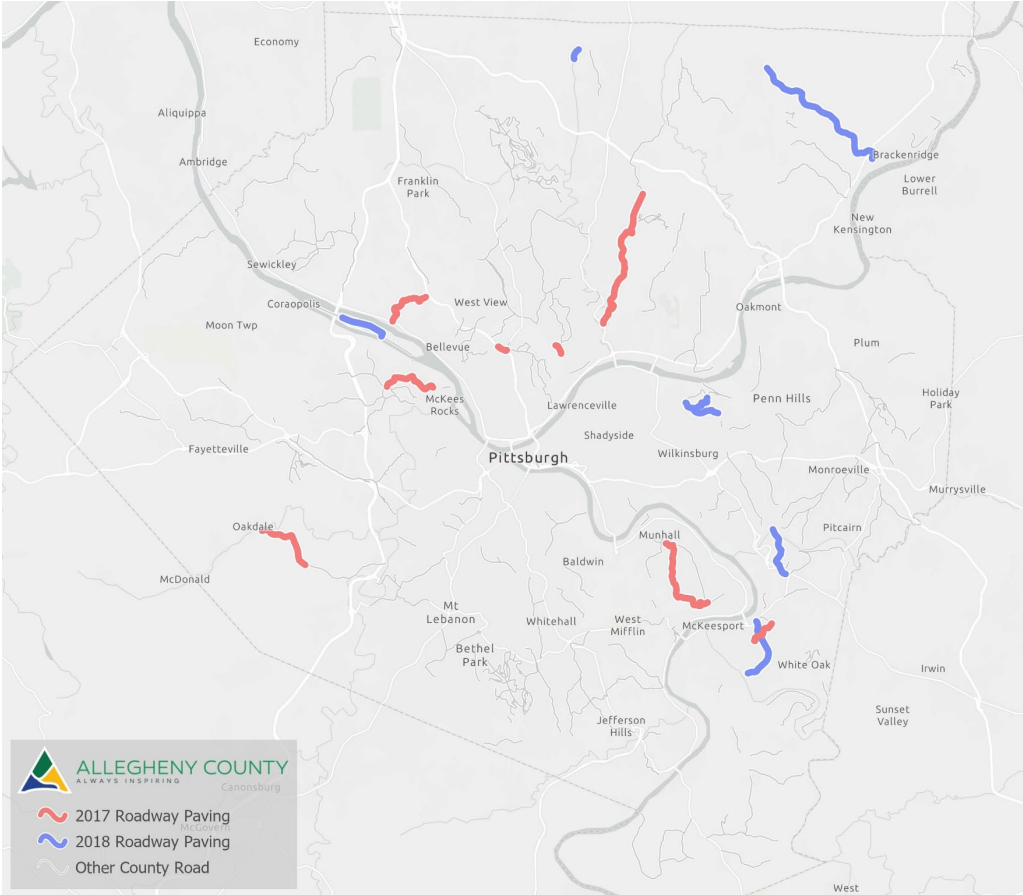
Matthew Edmond, AICP, Section Chief – Transportation Montgomery County Planning Commission, Executive Director, Montgomery County Transportation Authority



William Clark III, AICP, Chief, Transportation Planning, York County Planning Commission



Jason J. Molinero, PE ,Deputy Director, Allegheny County Department of Public Works



Shawn McLaughlin, AICP, CPRP, Acting Chief Clerk, Planning & Economic Development Director, Union County

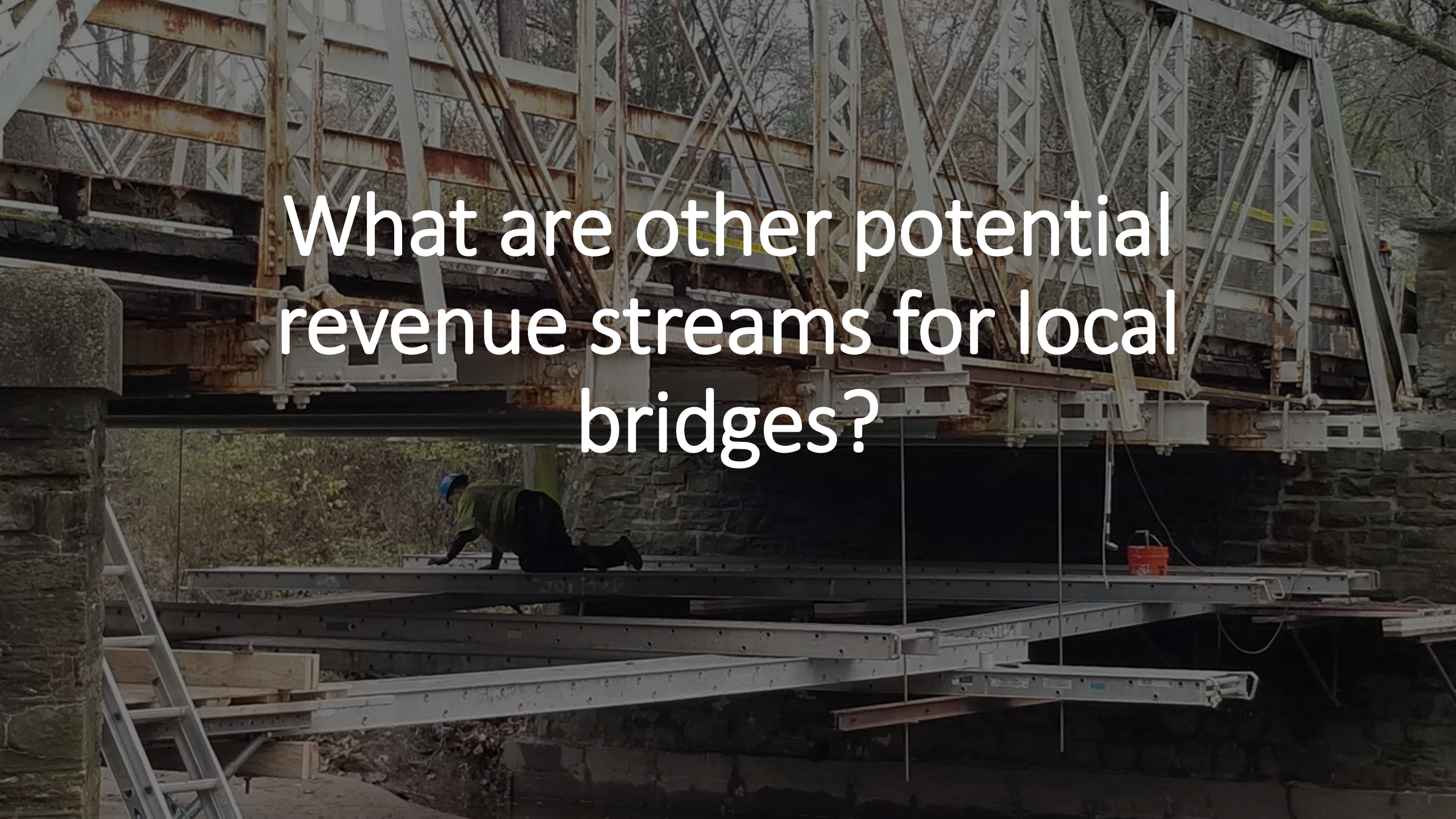




**How did politics play
into County's adoption
of approval process?**



- What were early successes of your program?
- What were your programs biggest surprises?

A photograph of a bridge under construction. The bridge's steel truss structure is visible, with a worker in a blue hard hat and green safety vest kneeling on a horizontal steel beam. The bridge is supported by stone masonry piers. The background shows trees and a clear sky. The text "What are other potential revenue streams for local bridges?" is overlaid in white on the image.

What are other potential revenue streams for local bridges?

Will this fee help us in the long run?





Other questions?